

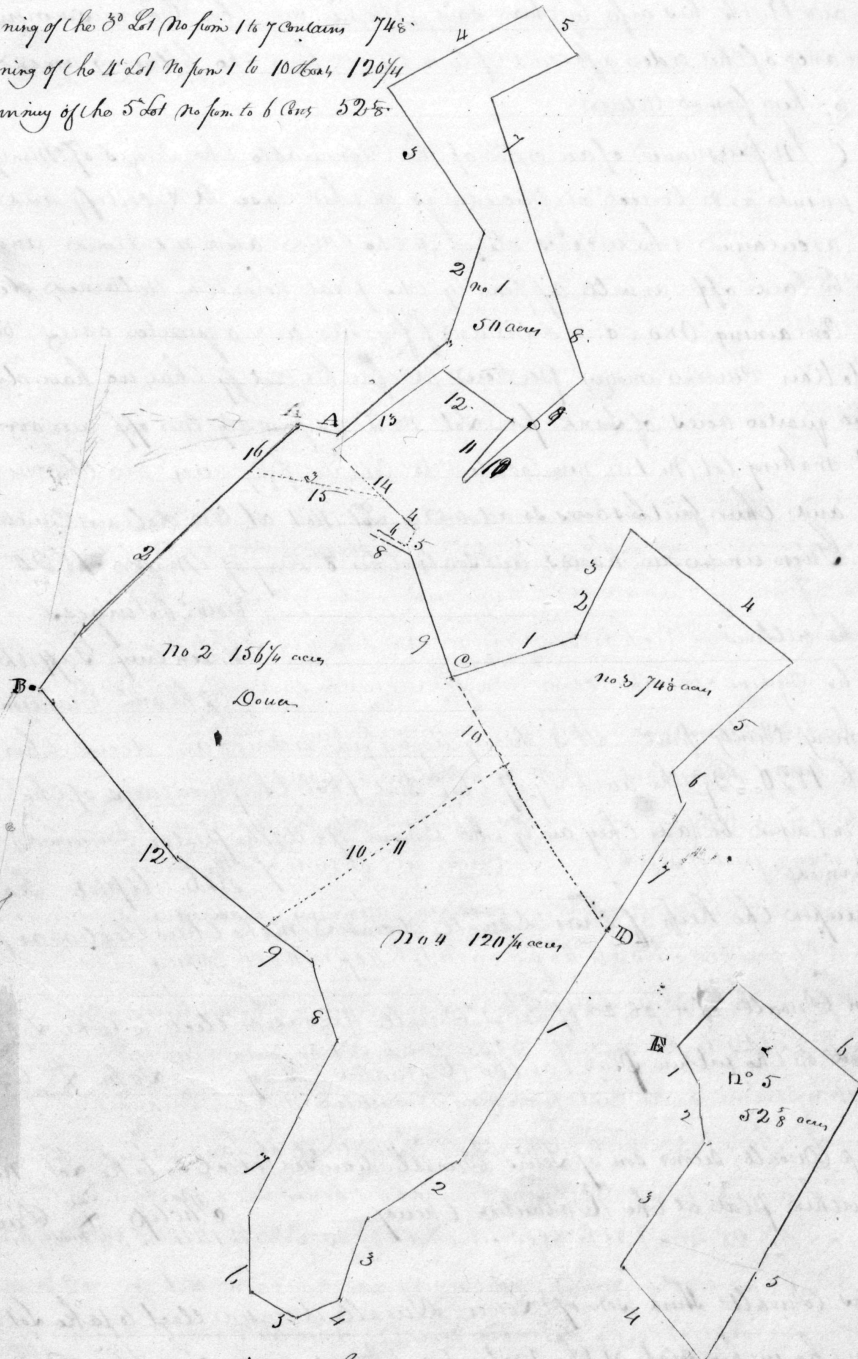
Upon Consideration of which said Commission and Return the Court here make the following order viz

Upon Viewing the return and proceedings of the Commissioners in this Case at the motion of the petitioner Counsel the Court orders that the said Commission be opened and amended by the said Commissioners the return and proceedings aforesaid appearing to the Court to be irregular and illegal

By Order of Court 25<sup>th</sup> May 1819

The plat returned and annexed to the said Return and Commission ensues as following viz

- A The Beginning of the 1<sup>st</sup> Lot No from 1 to 16 Contains 50 acres
- B The Beginning of the 2<sup>nd</sup> Lot No from 1 to 12 Contains 156 1/4
- C The Beginning of the 3<sup>rd</sup> Lot No from 1 to 7 Contains 74 1/2
- D The Beginning of the 4<sup>th</sup> Lot No from 1 to 10 Contains 120 1/4
- E The Beginning of the 5<sup>th</sup> Lot No from 1 to 6 Contains 52 1/2



Laid Down by a scale of 50 perches or equal parts And the several tracts surveyed with an allowance and laid down by two degrees for Variation

J. Looper

November 5<sup>th</sup> 1818