

No. 6631. Equity.

The following is a Survey of Farm No. 2, the property of Nathan Chaney, late of Franklin County (deceased) and in Equity No. 6631 Part of Exhibit No. 3 and part of Exhibit No. 5.

Lot No. 1.

Beginning for the same at the end of the First-line of Exhibit No. 5. and running with it Twelve lines, 1st N. 6° W. 57 1/2 ps. to a stone, 2nd N. 77° W. 36 ps. to a stone, 3rd N. 17° W. 18 ps. to a stone, 4th N. 30° E. 29 ps. to a stone, 5th S. 86° E. 50 1/2 ps. to a stone, 6th S. 10° W. 57 1/2 ps. to a stone, 7th East 18 ps. to a stone, 8th N. 50° E. 34 ps. to a stake, 9th S. 47 1/2° E. 18 1/2 ps. to a stake, 10th S. 10 W. 53 ps. to a stone, 11th S. 5° E. 34 ps. to a stone; at the end of 13 1/2 ps. parcels on the Second-line of Exhibit No. 3 and with it, 12th N. 80° E. 57 1/2 ps. to a stone; at the end of the First-line of Exhibit No. 9 and with it reversed, 13th S. 70 1/2° E. 15 ps. to the middle of the Public-road, then with it: Three-Courses, 14th S. 33 1/2° W. 47 1/2 ps. to Church Lot 15th S. 50° W. 23 ps. to the Grave yard 16th S. 39° W. 53 1/2 ps. to the end of 20 3/4 ps. parcels on the First-line of Exhibit No. 3: then with it, 17th N. 3 1/2° W. 55 1/2 ps. to a stone; at the end of 13 1/2 ps. parcels on the Thirteenth line of Exhibit No. 5 and with it, 18th S. 90° W. 58 ps. to a stone, at the end of the Second-line of Exhibit No. 8 and with it reversed, 19th N. 2 1/4° E. 34 1/2 ps. to the end of 53 parcels on the First line of Exhibit No. 5 then with it, 20th N. 70 1/2° E. 40 ps. to the Beginning.

Containing 95 - 2 - 0

Lot No. 2.

Beginning for the same at the Beginning of Exhibit No. 3 and running with the First-line thereof 1st N. 34° W. 17 1/2 ps. to Exhibit No. 6, then with it Three-Courses, 2nd S. 58° E. 7 ps. 3rd N. 41° E. 16 ps. 4th N. 60° E. 6 1/2 ps. to the end of the Third-line of Exhibit No. 3: and then with the following Two-lines thereof, 5th S. 8 1/2° E. 29 1/2 ps., 6th S. 89 1/2° W. 55 ps. to the Beginning Containing 3 - 0 - 0.

Lot No. 3.

Beginning at the end of the Third line of Lot No. 2 and running 1st N. 54 3/4° W. 9 1/2 ps. to the Public-road and with it 2nd N. 39° E. 12 7/10 ps. 3rd S. 48 1/4° E. 11 1/2 ps. to the end of 105 parcels on the Third line of Exhibit No. 3 and with it, 4th S. 33 3/4° W. 5 ps. to the end of 5th S. 60° W. 6 1/2 ps. to the Beginning Containing One Acre more or less per Edward Alldridge.

January 22, 1877 Surveyor Percival Co

Note: - This Survey is made from true Meridian: Magnetic Declination 4" 40"

Filed February 20 1877

vege  
ma  
in  
land  
; appear  
House  
sidings  
and  
  
above  
less, the  
can  
fossil  
productive  
a fossil  
mineral  
a fossil  
and  
ing  
Cops  
  
less,  
to  
is  
divided  
traps  
well  
and  
has  
well  
me,  
and  
the  
present  
  
of  
the  
location  
is  
from  
in  
noted  
scale  
or  
will  
be  
be  
color  
  
of  
specimens  
in  
the  
camps  
Chaney  
contains  
at  
and  
could  
according

real



No. 6631. Equity.

we hereby certify that on this 13<sup>th</sup> day of February 1877 we purchase of John B. Mottet trustee the real estate described in the annexed advertisement as the 3<sup>rd</sup> parcel consisting of a farm containing 179 acres & parcels at and for the sum of twenty dollars per acre - - - - pay that they pay cash on the ratification by the Court, the foregoing copy is reserved.

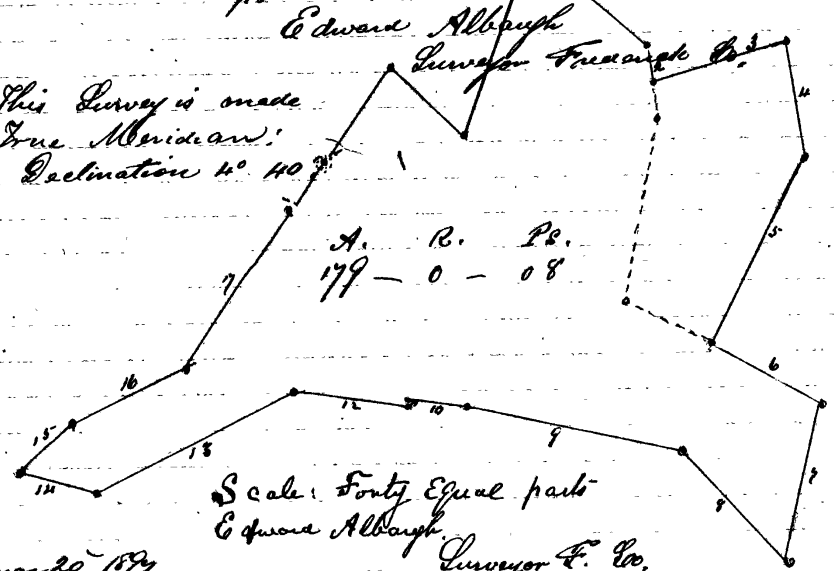
Witness  
 Alfred Sartell  
 Mary E. Whelan.  
 Lillie M. Gathrell  
 Minnie J. Firwood

The following is a Survey of the Home farm of the late Nathan Cheney (deceased) it being No. 6631 Equity and Exhibits No. 1 and 2 thereof beginning for the same at a Stone at the end of the Fourth-line of a Tract of land called "Red as you like" it being the beginning of the Ninety-acre part of Exhibit No. 2 and running with the 5<sup>th</sup> and 6<sup>th</sup> lines thereof 1<sup>st</sup> S. 57° E. 58 ps, 2<sup>nd</sup> S. 70° E. 13 1/2 ps, to the end of the 2<sup>nd</sup> line of Exhibit No. 1 and with the following three lines thereof 3<sup>rd</sup> S. 57° E. 50 1/2 ps, 4<sup>th</sup> S. 70° E. 42 1/2 ps, to a stone, 5<sup>th</sup> S. 27 1/2° W. 79 1/2 ps, to the end of 33 ps, on the 8<sup>th</sup> line of "Just as you like", it being at the end of 33 perches on the fourth line of the Ninety-acre part of Exhibit No. 2 then with it five lines 6<sup>th</sup> S. 64° E. 48 ps, to a stone, 7<sup>th</sup> S. 13° W. 59 ps, 8<sup>th</sup> N. 43° W. 58 ps, 9<sup>th</sup> N. 78° W. 51 ps, 10<sup>th</sup> N. 82° W. 20 ps, to the end of 2 1/2 ps, on the Eighth-line of "Small-Tract" 11<sup>th</sup> 1/2 Acre part of Exhibit No. 2 then with it reverse 11<sup>th</sup> S. 5° W. 27 ps, 12<sup>th</sup> N. 75 1/2° W. 45 ps, 13<sup>th</sup> S. 63° W. 50 ps, 14<sup>th</sup> N. 74° W. 32 ps, 15<sup>th</sup> N. 49° E. 28 ps, 16<sup>th</sup> N. 66° E. 44 ps, 17<sup>th</sup> N. 32 1/2° E. 69 ps, 18<sup>th</sup> N. 39° E. 22 ps, to the beginning of "Small-Tract" It also being the beginning of the 11 1/2 Acre part of Exhibit No. 2 then continuing with the same course 14 1/2 perches then 19<sup>th</sup> S. 44° E. 36 ps to the end of 74 perches on the closing-line of the Ninety-acre part of Exhibit No. 2 then with it 20<sup>th</sup> N. 19 1/2° E. 74 ps to the beginning containing 179 - 0 - 8

per  
 Edward Albaugh  
 Surveyor Frederick Co.

"Note This Survey is made from True Meridian:  
 Magnetic Declination 40° 40'

A. B. P.  
 179 - 0 - 08



Scale: Forty Equal parts  
 E. Albaugh  
 Surveyor F. Co.

Filed February 20 1877

No. 9  
 7.  
 4.  
 you S. E.  
 the gran  
 and  
 for the  
 described  
 ng to the  
 ll. Red  
 of in the  
 2 portion  
 toment  
 from the  
 2 which  
 de and  
 sum of  
 ing to the  
 hany