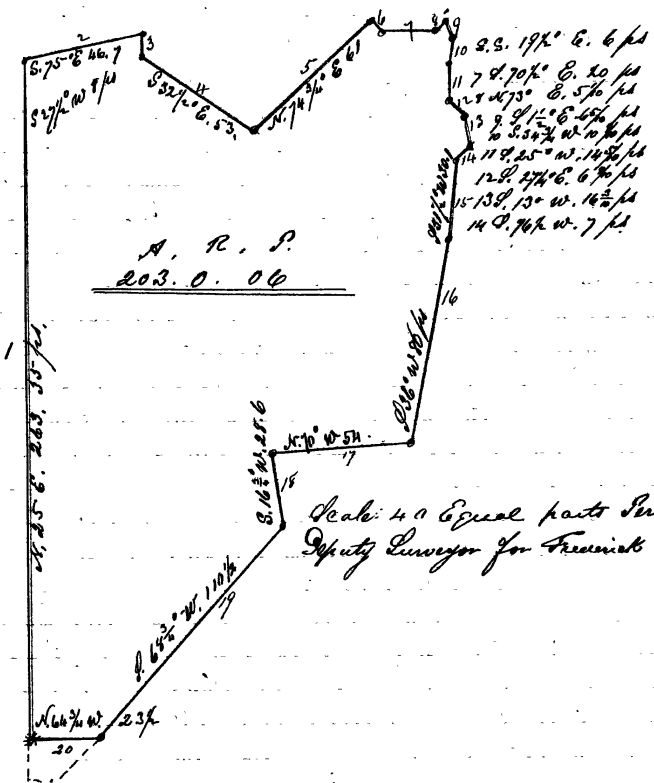


No. 6448 Equity.
Part of the Samuel Maught and Martin McAlhany Tracts

6448
town
of
the
in
and
the
-ing
95-
in
Even-
ning
inf
at,
how
5
4

Book
two
cont
spiral
per
January
its
ser
very
a few
to
with
Burdette
rest
and



The following is a plat and description of part of a part of a tract of land called Juliana Part of a tract of land called Brothers Good will Part of the Runway on part of Hawkins Merry Prop. O. any part of Frederica and part of Belvidera Manor to being part of the same land conveyed by Samuel Maught and others to Honatio Clapett by Deed dated 26th day of April 1856 and recorded in Liber C. P. No 27 Folio 464 one of the Land Records of Frederick County Also all that tract or parcel of land called Brothers Good will which was conveyed to Honatio Clapett by William J. Ross and Worthington Ross by Deed dated the 2nd day of November 1850, and recorded in Liber W. P. No 13 Folio 555 Beginning for the same so as to include the whole in one entire distance survey at a stone now planted and standing at the end of 15 7/8 ps on the 2nd line of the Deed aforesaid from Samuel Maught and others to Honatio Clapett and running thence by and with the lines of said Deed allowing for deviation N. 25° E. 263.35 ps to a stone S. 75° E. 46 1/2 ps to a stone S. 27 1/2° W. 8 ps S. 32 1/2° E. 53 ps ending in the Public road thence N. 74 1/2° E. 61 ps S. 19 1/2° E. 6 ps S. 77 1/2° E. 20 ps N. 73° E. 5 ps to the beginning of a Deed for 24 Acres, 1 Row 10 Acres conveyed by Samuel Clapett Attorney to Daniel Beachley by Deed dated June 14th 1892.

N. 64 1/2 S. County
 and Referred in Liber J. G. No. 3 Fols 270 It also being at the end
 of the line of 8th 3rd 13th Conveyed by Ann Clagett to Thomas
 John Clagett by Deed date the 7th of September 1858 and Referred
 in Liber A. F. No. 11 Fols 332 one of the Land Records of Frederick
 County and running thence by and with the lines of the 24 A
 1 R. 10 P. Deed of record bearing S. 1 1/2° E. 6.25⁰⁰ ps. to a Gum tree
 (marked) S. 34 3/4° W. 10 7/8 ps. S. 25° W. 14 1/2 ps. to a stone S. 27 1/2° E. 6 1/2
 ps. S. 13° W. 16 7/8 ps. to a stone near a marked Locust tree it
 being at the end of 4 ps on the 15th or S. 76° W. 11 ps line of the
 Deed of record from Samuel Maugh and others to Honatio
 Clagett's title with said Deed S. 76 1/2° W. 7 ps. to a stone S. 31 1/2° W.
 30 1/2 ps. S. 36° W. 8 ps. thence N. 70° W. 57 ps ending on the Centerline
 of the Public Road leading to Mark's Pastoralist Episcopal Church
 thence by and with the East side of said road S. 74 3/4° W. 25 1/2 ps
 to a large Stone formerly planted and standing at the north
 west Corner of St. Mark's Church property aforesaid It also being
 at the end of the 5th line of the Deed of record from William
 J. Ross and Worthington Ross to Honatio Clagett then by and
 with the Closing line of said Deed It also being the north line
 of Oakland Farm S. 85 3/4° W. 110 ps thence N. 64 1/2° W. 23 1/2 ps. to
 the Beginning Containing 203⁰⁰ R. 06 Two Hundred and Three
 Acres and Six Square perches of Land

For R. A. Raper
 Deputy Surveyor for
 Frederick County

Courses and Distances from B.

1 N. 25° E.	263.35 ps
2 S. 75° E.	46.70 "
3 S. 27 1/2° W.	8.00 "
4 S. 32 1/2° E.	53.00 "
5 N. 74 3/4° E.	61.00 "
6 S. 19 1/2° E.	6.00 "
7 S. 70 1/2° E.	20.00 "
8 N. 73° E.	5.10 "
9 S. 1 1/2° E.	6.50 "
10 S. 34 3/4° W.	10.50 "
11 S. 25° W.	14.50 "
12 S. 27 1/2° E.	6.80 "
13 S. 13° W.	16.30 "
14 S. 76 1/2° W.	7.00 "
15 S. 31 1/2° W.	30.10 "
16 S. 36° W.	80.00 "
17 N. 70° W.	54.20 "
18 S. 16 3/4° W.	28.60 "
19 S. 68 3/4° W.	110.30 "
20 N. 64 1/2° W.	23.50 "
Containing 203 ⁰⁰ R. 06	To the Beginning

Filed October 17th 1895.

No. 6448 Equity.

perches part of the Runway on Maryland it being the second parcel mentioned in the Deed of record from William Shellman to Grant Blagett and running thence by and with the second line thereof allowing for variation N. 5° W. 43¹/₂ ft. to the end of the third line of the third parcel containing one acre of land mentioned in the Deed of record from William Shellman to Grant Blagett thence by and with the fourth line thereof allowing as aforesaid N. 5° W. 4¹/₂ ft. to a planted stone standing in the middle of the Harpus Ferry Ridge Road thence by and with the middle of said road N. 79° E. 35¹/₂ ft. to a planted stone at the end of the ninth line of "Oakland Farm" still with said road N. 79° E. 143¹/₂ ft. N. 71° E. 24 ft. N. 75¹/₂° E. 14 ft. N. 75¹/₂° E. 14¹/₂ ft. to a planted stone, standing at the entrance to the public road leading to the Point of Rocks it also being at the end of the third line of the second parcel expressed in a Deed from Montserrat McAlhany to Grant Blagett by Deed bearing date April 1st, 1845 and recorded in Liber W.B. T. No. 2 Folio 547 one of the Land Records of Prince Georges County thence by and with said third line reversed and with the Public road aforesaid leading to the Point of Rocks S. 9¹/₂° E. 7¹/₂ ft. to a stone S. 85¹/₂° E. 32¹/₂ ft. to the beginning

Containing 263. 0 - 18¹/₂ ft.
Two Hundred and Fifty three Acres, No Roads and Eighteen square perches of land.

Courses from A

1	S.	17 ³ / ₄ "	E.	91. 15 "
2	S.	74 ³ / ₄ "	W.	191. 80 "
3	N.	27 ³ / ₄ "	W.	25. 00 "
4	S.	52 ³ / ₄ "	W.	72. 50 "
5	N.	19 "	W.	121. 50 "
6	N.	5 "	W.	147. 90 "
7	N.	79 "	E.	38. 00 "
8	N.	67 ¹ / ₂ "	E.	143. 60 "
9	N.	71 ¹ / ₂ "	E.	24. 00 "
10	N.	73 ³ / ₄ "	E.	14. 00 "
11	N.	75 ¹ / ₄ "	E.	16. 25 "
12	S.	9 ¹ / ₂ "	E.	74. 20 "
13	S.	85 ¹ / ₂ "	E.	32. 60 "

Containing 263 - 0 - 18¹/₂ ft. to the beginning

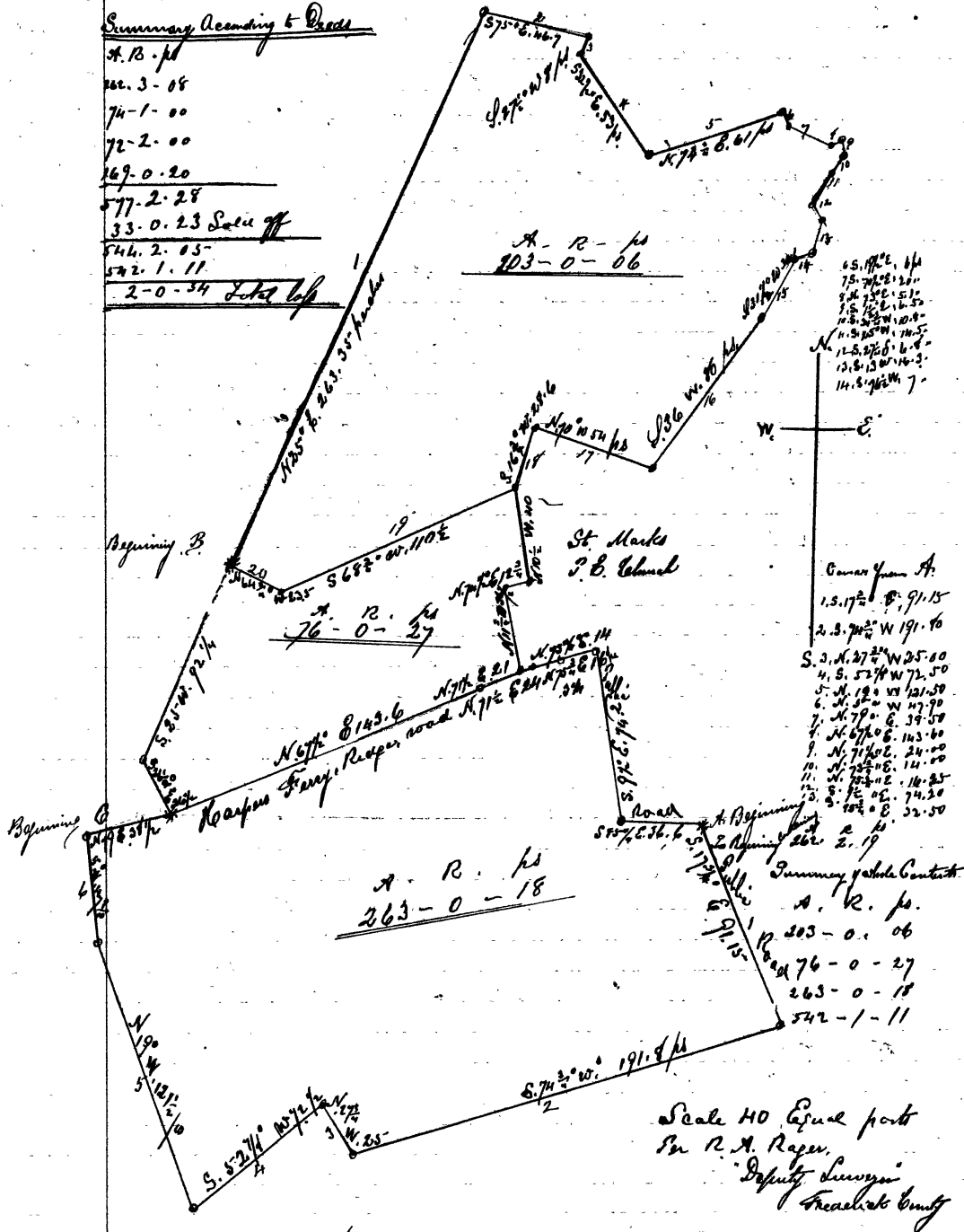
Filed Oct. 17 1860

the
to
an
a part
enough
about
ret
9.15
with
line
at
late
its
30
line
to
the
it
239

No. 448. Equity
 Plat of Homestead Allegedly Sold

Summary According to Deeds

- A. R. pt
- 102-3-08
- 74-1-00
- 72-2-00
- 69-0-20
- 77-2-28
- 33-0-23 Sale of
- 544-2-05
- 542-1-11
- 2-0-34 Lot of



Retified &c

- 65.172 E. 1/4
- 75.702 E. 1/4
- 84.252 E. 1/4
- 93.302 E. 1/4
- 102.352 E. 1/4
- 111.402 E. 1/4
- 120.452 E. 1/4
- 129.502 E. 1/4
- 138.552 E. 1/4
- 147.602 E. 1/4
- 156.652 E. 1/4
- 165.702 E. 1/4
- 174.752 E. 1/4
- 183.802 E. 1/4
- 192.852 E. 1/4
- 201.902 E. 1/4
- 210.952 E. 1/4
- 220.002 E. 1/4
- 229.052 E. 1/4
- 238.102 E. 1/4
- 247.152 E. 1/4
- 256.202 E. 1/4
- 265.252 E. 1/4
- 274.302 E. 1/4
- 283.352 E. 1/4
- 292.402 E. 1/4
- 301.452 E. 1/4
- 310.502 E. 1/4
- 319.552 E. 1/4
- 328.602 E. 1/4
- 337.652 E. 1/4
- 346.702 E. 1/4
- 355.752 E. 1/4
- 364.802 E. 1/4
- 373.852 E. 1/4
- 382.902 E. 1/4
- 391.952 E. 1/4
- 401.002 E. 1/4
- 410.052 E. 1/4
- 419.102 E. 1/4
- 428.152 E. 1/4
- 437.202 E. 1/4
- 446.252 E. 1/4
- 455.302 E. 1/4
- 464.352 E. 1/4
- 473.402 E. 1/4
- 482.452 E. 1/4
- 491.502 E. 1/4
- 500.552 E. 1/4
- 509.602 E. 1/4
- 518.652 E. 1/4
- 527.702 E. 1/4
- 536.752 E. 1/4
- 545.802 E. 1/4
- 554.852 E. 1/4
- 563.902 E. 1/4
- 572.952 E. 1/4
- 582.002 E. 1/4
- 591.052 E. 1/4
- 600.102 E. 1/4
- 609.152 E. 1/4
- 618.202 E. 1/4
- 627.252 E. 1/4
- 636.302 E. 1/4
- 645.352 E. 1/4
- 654.402 E. 1/4
- 663.452 E. 1/4
- 672.502 E. 1/4
- 681.552 E. 1/4
- 690.602 E. 1/4
- 699.652 E. 1/4
- 708.702 E. 1/4
- 717.752 E. 1/4
- 726.802 E. 1/4
- 735.852 E. 1/4
- 744.902 E. 1/4
- 753.952 E. 1/4
- 763.002 E. 1/4
- 772.052 E. 1/4
- 781.102 E. 1/4
- 790.152 E. 1/4
- 799.202 E. 1/4
- 808.252 E. 1/4
- 817.302 E. 1/4
- 826.352 E. 1/4
- 835.402 E. 1/4
- 844.452 E. 1/4
- 853.502 E. 1/4
- 862.552 E. 1/4
- 871.602 E. 1/4
- 880.652 E. 1/4
- 889.702 E. 1/4
- 898.752 E. 1/4
- 907.802 E. 1/4
- 916.852 E. 1/4
- 925.902 E. 1/4
- 934.952 E. 1/4
- 944.002 E. 1/4
- 953.052 E. 1/4
- 962.102 E. 1/4
- 971.152 E. 1/4
- 980.202 E. 1/4
- 989.252 E. 1/4
- 998.302 E. 1/4
- 1007.352 E. 1/4
- 1016.402 E. 1/4
- 1025.452 E. 1/4
- 1034.502 E. 1/4
- 1043.552 E. 1/4
- 1052.602 E. 1/4
- 1061.652 E. 1/4
- 1070.702 E. 1/4
- 1079.752 E. 1/4
- 1088.802 E. 1/4
- 1097.852 E. 1/4
- 1106.902 E. 1/4
- 1115.952 E. 1/4
- 1125.002 E. 1/4
- 1134.052 E. 1/4
- 1143.102 E. 1/4
- 1152.152 E. 1/4
- 1161.202 E. 1/4
- 1170.252 E. 1/4
- 1179.302 E. 1/4
- 1188.352 E. 1/4
- 1197.402 E. 1/4
- 1206.452 E. 1/4
- 1215.502 E. 1/4
- 1224.552 E. 1/4
- 1233.602 E. 1/4
- 1242.652 E. 1/4
- 1251.702 E. 1/4
- 1260.752 E. 1/4
- 1269.802 E. 1/4
- 1278.852 E. 1/4
- 1287.902 E. 1/4
- 1296.952 E. 1/4
- 1306.002 E. 1/4
- 1315.052 E. 1/4
- 1324.102 E. 1/4
- 1333.152 E. 1/4
- 1342.202 E. 1/4
- 1351.252 E. 1/4
- 1360.302 E. 1/4
- 1369.352 E. 1/4
- 1378.402 E. 1/4
- 1387.452 E. 1/4
- 1396.502 E. 1/4
- 1405.552 E. 1/4
- 1414.602 E. 1/4
- 1423.652 E. 1/4
- 1432.702 E. 1/4
- 1441.752 E. 1/4
- 1450.802 E. 1/4
- 1459.852 E. 1/4
- 1468.902 E. 1/4
- 1477.952 E. 1/4
- 1487.002 E. 1/4
- 1496.052 E. 1/4
- 1505.102 E. 1/4
- 1514.152 E. 1/4
- 1523.202 E. 1/4
- 1532.252 E. 1/4
- 1541.302 E. 1/4
- 1550.352 E. 1/4
- 1559.402 E. 1/4
- 1568.452 E. 1/4
- 1577.502 E. 1/4
- 1586.552 E. 1/4
- 1595.602 E. 1/4
- 1604.652 E. 1/4
- 1613.702 E. 1/4
- 1622.752 E. 1/4
- 1631.802 E. 1/4
- 1640.852 E. 1/4
- 1649.902 E. 1/4
- 1658.952 E. 1/4
- 1668.002 E. 1/4
- 1677.052 E. 1/4
- 1686.102 E. 1/4
- 1695.152 E. 1/4
- 1704.202 E. 1/4
- 1713.252 E. 1/4
- 1722.302 E. 1/4
- 1731.352 E. 1/4
- 1740.402 E. 1/4
- 1749.452 E. 1/4
- 1758.502 E. 1/4
- 1767.552 E. 1/4
- 1776.602 E. 1/4
- 1785.652 E. 1/4
- 1794.702 E. 1/4
- 1803.752 E. 1/4
- 1812.802 E. 1/4
- 1821.852 E. 1/4
- 1830.902 E. 1/4
- 1839.952 E. 1/4
- 1849.002 E. 1/4
- 1858.052 E. 1/4
- 1867.102 E. 1/4
- 1876.152 E. 1/4
- 1885.202 E. 1/4
- 1894.252 E. 1/4
- 1903.302 E. 1/4
- 1912.352 E. 1/4
- 1921.402 E. 1/4
- 1930.452 E. 1/4
- 1939.502 E. 1/4
- 1948.552 E. 1/4
- 1957.602 E. 1/4
- 1966.652 E. 1/4
- 1975.702 E. 1/4
- 1984.752 E. 1/4
- 1993.802 E. 1/4
- 2002.852 E. 1/4
- 2011.902 E. 1/4
- 2020.952 E. 1/4
- 2030.002 E. 1/4
- 2039.052 E. 1/4
- 2048.102 E. 1/4
- 2057.152 E. 1/4
- 2066.202 E. 1/4
- 2075.252 E. 1/4
- 2084.302 E. 1/4
- 2093.352 E. 1/4
- 2102.402 E. 1/4
- 2111.452 E. 1/4
- 2120.502 E. 1/4
- 2129.552 E. 1/4
- 2138.602 E. 1/4
- 2147.652 E. 1/4
- 2156.702 E. 1/4
- 2165.752 E. 1/4
- 2174.802 E. 1/4
- 2183.852 E. 1/4
- 2192.902 E. 1/4
- 2201.952 E. 1/4
- 2211.002 E. 1/4
- 2220.052 E. 1/4
- 2229.102 E. 1/4
- 2238.152 E. 1/4
- 2247.202 E. 1/4
- 2256.252 E. 1/4
- 2265.302 E. 1/4
- 2274.352 E. 1/4
- 2283.402 E. 1/4
- 2292.452 E. 1/4
- 2301.502 E. 1/4
- 2310.552 E. 1/4
- 2319.602 E. 1/4
- 2328.652 E. 1/4
- 2337.702 E. 1/4
- 2346.752 E. 1/4
- 2355.802 E. 1/4
- 2364.852 E. 1/4
- 2373.902 E. 1/4
- 2382.952 E. 1/4
- 2392.002 E. 1/4
- 2401.052 E. 1/4
- 2410.102 E. 1/4
- 2419.152 E. 1/4
- 2428.202 E. 1/4
- 2437.252 E. 1/4
- 2446.302 E. 1/4
- 2455.352 E. 1/4
- 2464.402 E. 1/4
- 2473.452 E. 1/4
- 2482.502 E. 1/4
- 2491.552 E. 1/4
- 2500.602 E. 1/4
- 2509.652 E. 1/4
- 2518.702 E. 1/4
- 2527.752 E. 1/4
- 2536.802 E. 1/4
- 2545.852 E. 1/4
- 2554.902 E. 1/4
- 2563.952 E. 1/4
- 2573.002 E. 1/4
- 2582.052 E. 1/4
- 2591.102 E. 1/4
- 2600.152 E. 1/4
- 2609.202 E. 1/4
- 2618.252 E. 1/4
- 2627.302 E. 1/4
- 2636.352 E. 1/4
- 2645.402 E. 1/4
- 2654.452 E. 1/4
- 2663.502 E. 1/4
- 2672.552 E. 1/4
- 2681.602 E. 1/4
- 2690.652 E. 1/4
- 2699.702 E. 1/4
- 2708.752 E. 1/4
- 2717.802 E. 1/4
- 2726.852 E. 1/4
- 2735.902 E. 1/4
- 2744.952 E. 1/4
- 2754.002 E. 1/4
- 2763.052 E. 1/4
- 2772.102 E. 1/4
- 2781.152 E. 1/4
- 2790.202 E. 1/4
- 2799.252 E. 1/4
- 2808.302 E. 1/4
- 2817.352 E. 1/4
- 2826.402 E. 1/4
- 2835.452 E. 1/4
- 2844.502 E. 1/4
- 2853.552 E. 1/4
- 2862.602 E. 1/4
- 2871.652 E. 1/4
- 2880.702 E. 1/4
- 2889.752 E. 1/4
- 2898.802 E. 1/4
- 2907.852 E. 1/4
- 2916.902 E. 1/4
- 2925.952 E. 1/4
- 2935.002 E. 1/4
- 2944.052 E. 1/4
- 2953.102 E. 1/4
- 2962.152 E. 1/4
- 2971.202 E. 1/4
- 2980.252 E. 1/4
- 2989.302 E. 1/4
- 2998.352 E. 1/4
- 3007.402 E. 1/4
- 3016.452 E. 1/4
- 3025.502 E. 1/4
- 3034.552 E. 1/4
- 3043.602 E. 1/4
- 3052.652 E. 1/4
- 3061.702 E. 1/4
- 3070.752 E. 1/4
- 3079.802 E. 1/4
- 3088.852 E. 1/4
- 3097.902 E. 1/4
- 3106.952 E. 1/4
- 3116.002 E. 1/4
- 3125.052 E. 1/4
- 3134.102 E. 1/4
- 3143.152 E. 1/4
- 3152.202 E. 1/4
- 3161.252 E. 1/4
- 3170.302 E. 1/4
- 3179.352 E. 1/4
- 3188.402 E. 1/4
- 3197.452 E. 1/4
- 3206.502 E. 1/4
- 3215.552 E. 1/4
- 3224.602 E. 1/4
- 3233.652 E. 1/4
- 3242.702 E. 1/4
- 3251.752 E. 1/4
- 3260.802 E. 1/4
- 3269.852 E. 1/4
- 3278.902 E. 1/4
- 3287.952 E. 1/4
- 3297.002 E. 1/4
- 3306.052 E. 1/4
- 3315.102 E. 1/4
- 3324.152 E. 1/4
- 3333.202 E. 1/4
- 3342.252 E. 1/4
- 3351.302 E. 1/4
- 3360.352 E. 1/4
- 3369.402 E. 1/4
- 3378.452 E. 1/4
- 3387.502 E. 1/4
- 3396.552 E. 1/4
- 3405.602 E. 1/4
- 3414.652 E. 1/4
- 3423.702 E. 1/4
- 3432.752 E. 1/4
- 3441.802 E. 1/4
- 3450.852 E. 1/4
- 3459.902 E. 1/4
- 3468.952 E. 1/4
- 3478.002 E. 1/4
- 3487.052 E. 1/4
- 3496.102 E. 1/4
- 3505.152 E. 1/4
- 3514.202 E. 1/4
- 3523.252 E. 1/4
- 3532.302 E. 1/4
- 3541.352 E. 1/4
- 3550.402 E. 1/4
- 3559.452 E. 1/4
- 3568.502 E. 1/4
- 3577.552 E. 1/4
- 3586.602 E. 1/4
- 3595.652 E. 1/4
- 3604.702 E. 1/4
- 3613.752 E. 1/4
- 3622.802 E. 1/4
- 3631.852 E. 1/4
- 3640.902 E. 1/4
- 3649.952 E. 1/4
- 3659.002 E. 1/4
- 3668.052 E. 1/4
- 3677.102 E. 1/4
- 3686.152 E. 1/4
- 3695.202 E. 1/4
- 3704.252 E. 1/4
- 3713.302 E. 1/4
- 3722.352 E. 1/4
- 3731.402 E. 1/4
- 3740.452 E. 1/4
- 3749.502 E. 1/4
- 3758.552 E. 1/4
- 3767.602 E. 1/4
- 3776.652 E. 1/4
- 3785.702 E. 1/4
- 3794.752 E. 1/4
- 3803.802 E. 1/4
- 3812.852 E. 1/4
- 3821.902 E. 1/4
- 3830.952 E. 1/4
- 3840.002 E. 1/4
- 3849.052 E. 1/4
- 3858.102 E. 1/4
- 3867.152 E. 1/4
- 3876.202 E. 1/4
- 3885.252 E. 1/4
- 3894.302 E. 1/4
- 3903.352 E. 1/4
- 3912.402 E. 1/4
- 3921.452 E. 1/4
- 3930.502 E. 1/4
- 3939.552 E. 1/4
- 3948.602 E. 1/4
- 3957.652 E. 1/4
- 3966.702 E. 1/4
- 3975.752 E. 1/4
- 3984.802 E. 1/4
- 3993.852 E. 1/4
- 4002.902 E. 1/4
- 4011.952 E. 1/4
- 4021.002 E. 1/4
- 4030.052 E. 1/4
- 4039.102 E. 1/4
- 4048.152 E. 1/4
- 4057.202 E. 1/4
- 4066.252 E. 1/4
- 4075.302 E. 1/4
- 4084.352 E. 1/4
- 4093.402 E. 1/4
- 4102.452 E. 1/4
- 4111.502 E. 1/4
- 4120.552 E. 1/4
- 4129.602 E. 1/4
- 4138.652 E. 1/4
- 4147.702 E. 1/4
- 4156.752 E. 1/4
- 4165.802 E. 1/4
- 4174.852 E. 1/4
- 4183.902 E. 1/4
- 4192.952 E. 1/4
- 4202.002 E. 1/4
- 4211.052 E. 1/4
- 4220.102 E. 1/4
- 4229.152 E. 1/4
- 4238.202 E. 1/4
- 4247.252 E. 1/4
- 4256.302 E. 1/4
- 4265.352 E. 1/4
- 4274.402 E. 1/4
- 4283.452 E. 1/4
- 4292.502 E. 1/4
- 4301.552 E. 1/4
- 4310.602 E. 1/4
- 4319.652 E. 1/4
- 4328.702 E. 1/4
- 4337.752 E. 1/4
- 4346.802 E. 1/4
- 4355.852 E. 1/4
- 4364.902 E. 1/4
- 4373.952 E. 1/4
- 4383.002 E. 1/4
- 4392.052 E. 1/4
- 4401.102 E. 1/4
- 4410.152 E. 1/4
- 4419.202 E. 1/4
- 4428.252 E. 1/4
- 4437.302 E. 1/4
- 4446.352 E. 1/4
- 4455.402 E. 1/4
- 4464.452 E. 1/4
- 4473.502 E. 1/4
- 4482.552 E. 1/4
- 4491.602 E. 1/4
- 4500.652 E. 1/4
- 4509.702 E. 1/4
- 4518.752 E. 1/4
- 4527.802 E. 1/4
- 4536.852 E. 1/4
- 4545.902 E. 1/4
- 4554.952 E. 1/4
- 4564.002 E. 1/4
- 4573.052 E. 1/4
- 4582.102 E. 1/4
- 4591.152 E. 1/4
- 4600.202 E. 1/4
- 4609.252 E. 1/4
- 4618.302 E. 1/4
- 4627.352 E. 1/4
- 4636.402 E. 1/4
- 4645.452 E. 1/4
- 4654.502 E. 1/4
- 4663.552 E. 1/4
- 4672.602 E. 1/4
- 4681.652 E. 1/4
- 4690.702 E. 1/4
- 4699.752 E. 1/4
- 4708.802 E. 1/4
- 4717.852 E. 1/4
- 4726.902 E. 1/4
- 4735.952 E. 1/4
- 4745.002 E. 1/4
- 4754.052 E. 1/4
- 4763.102 E. 1/4
- 4772.152 E. 1/4
- 4781.202 E. 1/4
- 4790.252 E. 1/4
- 4799.302 E. 1/4
- 4808.352 E. 1/4
- 4817.402 E. 1/4
- 4826.452 E. 1/4
- 4835.502 E. 1/4
- 4844.552 E. 1/4
- 4853.602 E. 1/4
- 4862.652 E. 1/4
- 4871.702 E. 1/4
- 4880.752 E. 1/4
- 4889.802 E. 1/4
- 4898.852 E. 1/4
- 4907.902 E. 1/4
- 4916.952 E. 1/4
- 4926.002 E. 1/4
- 4935.052 E. 1/4
- 4944.102 E. 1/4
- 4953.152 E. 1/4
- 4962.202 E. 1/4
- 4971.252 E. 1/4
- 4980.302 E. 1/4
- 4989.352 E. 1/4
- 4998.402 E. 1/4
- 5007.452 E. 1/4
- 5016.502 E. 1/4
- 5025.552 E. 1/4
- 5034.602 E. 1/4
- 5043.652 E. 1/4
- 5052.702 E. 1/4
- 5061.752 E. 1/4
- 5070.802 E. 1/4
- 5079.852 E. 1/4
- 5088.902 E. 1/4
- 5097.952 E. 1/4
- 5107.002 E. 1/4
- 5116.052 E. 1/4
- 5125.102 E. 1/4
- 5134.152 E. 1/4
- 5143.202 E. 1/4
- 5152.252 E. 1/4
- 5161.302 E. 1/4
- 5170.352 E. 1/4
- 5179.402 E. 1/4
- 5188.452 E. 1/4
- 5197.502 E. 1/4
- 5206.552 E. 1/4
- 5215.602 E. 1/4
- 5224.652 E. 1/4
- 5233.702 E. 1/4
- 5242.752 E. 1/4
- 5251.802 E. 1/4
- 5260.852 E. 1/4
- 5269.902 E. 1/4
- 5278.952 E. 1/4
- 5288.002 E. 1/4
- 5297.052 E. 1/4
- 5306.102 E. 1/4
- 5315.152 E. 1/4
- 5324.202 E. 1/4
- 5333.252 E. 1/4
- 5342.302 E. 1/4
- 5351.352 E. 1/4
- 5360.402 E. 1/4
- 5369.452 E. 1/4
- 5378.502 E. 1/4
- 5387.552 E. 1/4
- 5396.602 E. 1/4
- 5405.652 E. 1/4
- 5414.702 E. 1/4
- 5423.752 E. 1/4
-