

Frederick Co, MD - Equity DHH-1

No. 6880 Equity
Plot of Jeremiah Martin Land.

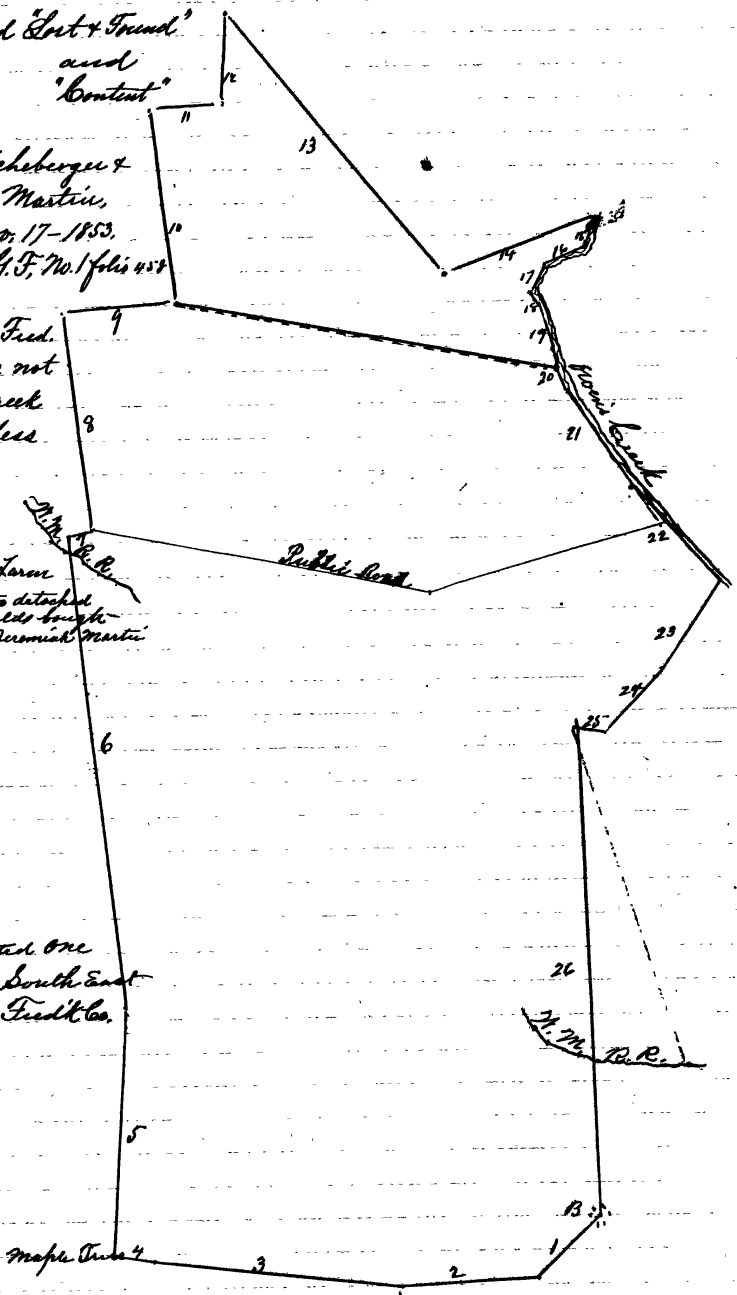
Originally called 'Lost & Found'
and
'Content'

The Farm,
From Joseph Eicheberger &
wife to Jeremiah Martin,
Dead dated Nov. 17-1853.
Recorded Liber B. G. F. No. 1 folio 458
for 296¹/₂ " 2 " 24¹/₂

A later survey by Fred.
Co. Surveyor does not
include Crown Creek
Accounting for a less
area

Acres, \square ft.
294 " 11 in farm
8 " 120 } two detached
13 " 40 } fields bought
316 " 11 } by Jeremiah Martin

Lying and situated one
mile East and South East
of Garraham, Fredk Co.
Md.



13¹/₂ acres from Sylvester Fel-
entine to Jeremiah Martin about 1863
then to Mrs. J. Martin, Jos. E.
Martin, Catharine Brown, April 28, 1877.

8³/₄
acres

8³/₄ acres from John Kelly & wife
to Jeremiah Martin dead dated March
7th 1856, Recorded in Liber E. B. No. 8, folio
617¹/₂, originally called 'Cane & Plenty'

No. 6880 Equity

'Exhibit 3'

Jeremiah Martin's Farms
Mets & Bounds
Courses and Distances
'Lost and Found'

Beginning at the South East Corner of the land at a
Stone planted on the East side of a road and running thence
with present bearings -

- S 46 3/4 W 28 perches with road to a Stone,
- S 85 3/4 W 40 " " to a Stone
- N 85 3/4 W 72 " " " "
- N 83 1/2 W 12.16 " " " Maple Trees
- N 1/4 E 74 " " " Stone
- N 8 1/2 W 138 " " " South side of Public Road.
- N 84 1/2 E 8.36 " Crossing said road.
- N 9 W 64.50 " according to a line agreed upon by parties
- N 84 1/2 E 34 " "
- N 84 W 56.88 " "
- N 87 1/2 E 21.55 " "
- N 1/4 E 27 to Stone
- S 41 + E 98.4
- N 67 3/4 E 50 to Owen's Creek,
- S 30 W 9 with creek
- S 66 W 14 " "
- S 25 W 8.4 " "
- S 43 3/4 E 4.7 " "
- S 18 1/4 E 13.25 " "
- S 23 3/4 E 14.35 " "
- S 32 1/2 E 38 " "
- S 46 1/4 E 37 " "
- S 31 1/2 W 28 " with east side of lane,
- S 43 3/4 W 25.2 " "
- N 82 1/4 W 8 ps to Stone at Sugar berry tree,
- S 3 3/4 + E 145.8 ps with lane or road to beginning

A. D. P.
294. 11.

'Exhibit No. 4'

Description of two fields detached from farm originally called
'Peace and Plenty' A. B. Co.

For the 8 3/4 acres - being a part of the 15. 3. 32 lot -
Beginning at the end of 26.1 ps, running S 18 1/4 W
from a Stone planted at the end of second line, of whole
tract and running S 18 1/4 W 31.9 ps with Road in part
N 87 1/4 W 44, N 18 3/4 E 21.9, S 87 1/2 E 44 to Rig. - 8 3/4 acres
more or less, being the South part of land described deed re-
corded - Liber & S. No. 8, - folio 617 & c.

For the 13 1/4 Acres - was a wood lot - now cultivated, Beg. at the
Southwest corner of 8 3/4 acre field or at the end of 9 1/2 perches
on the 6th line of the tract conveyed by Jeremiah Martin & wife

No. 6880 Equity

Exhibit No. 4. to Sarah R. Martin running thence,
 S $18\frac{3}{4}$ W 53.76 perches
 S $87\frac{1}{2}$ E 40
 N $19\frac{1}{2}$ E 50.32 per to Stone
 N $82\frac{1}{2}$ W 40 to Bg. - $13\frac{1}{4}$ acres
 Bought from — — —